

REPUBLIC OF CROATIA
MINISTRY OF THE SEA, TRANSPORT AND INFRASTRUCTURE
Directorate for Inland Navigation

Status of Inland Navigation in Croatia

LIDIJA HUBALEK

*Joint Workshop on Waterway Management of EUSDR/PA1a and the Danube Commission, Budapest, 4th March
2025*



REPUBLIC OF CROATIA
Ministry of the Sea,
Transport and Infrastructure

CONTENT

Critical locations 2020-2024

Monitoring, rehabilitation and maintenance activities in 2024



Critical locations 2020-2024

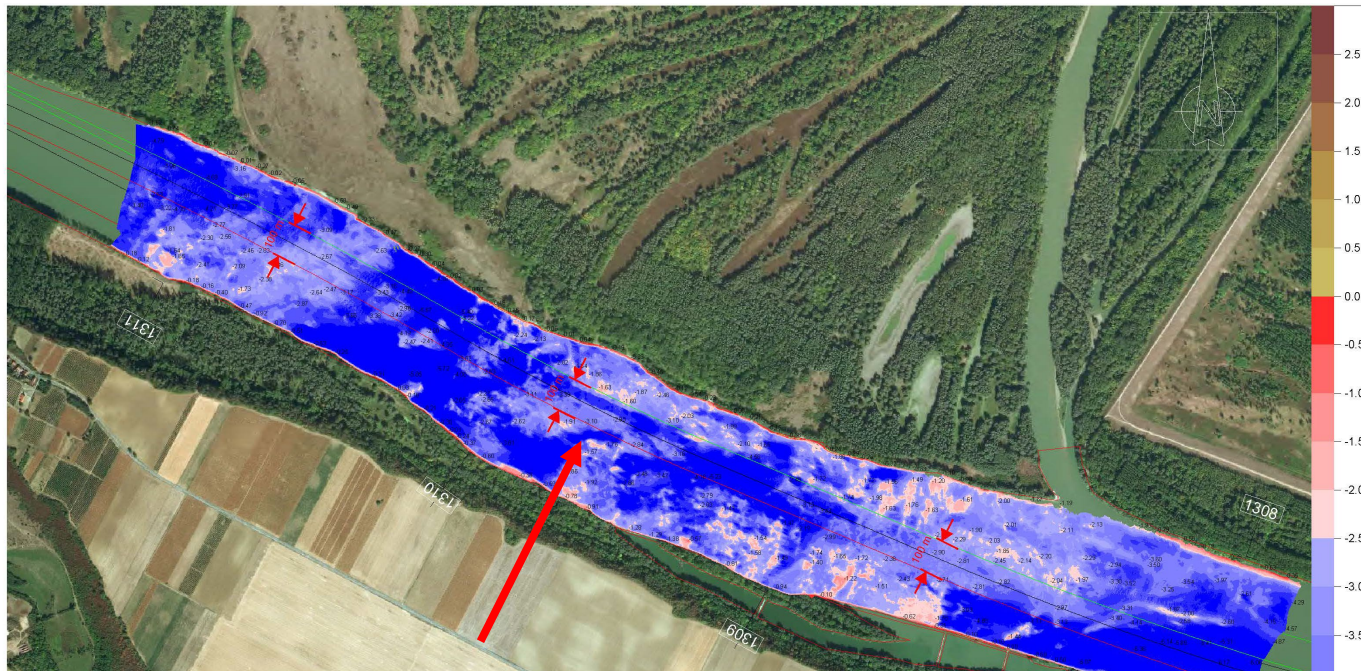
CS	Name of location	from rkm	to rkm
1	Bezdan	1,429.0	1,425.0
2	Siga Kazuk	1,424.2	1,414.4
3	Apatin	1,408.2	1,400.0
4	Židovski rukavac	1,397.2	1,389.0
5	Ušće Drave	1,388.8	1,382.0
6	Aljmaš	1,381.4	1,378.2
7	Staklar	1,376.8	1,373.4
8	Erdut	1,371.4	1,366.4
9	Bogojevo	1,366.2	1,361.4
10	Dalj	1,357.0	1,351.0
11	Borovo I	1,348.6	1,343.6
12	Borovo II	1,340.6	1,338.0
13	Vukovar	1,332.0	1,325.0
14	Sotin	1,324.0	1,320.0
15	Opatovac	1,315.4	1,314.6
16	Mohovo	1,311.4	1,307.6
17	Bačka Palanka	1,302.0	1,300.0



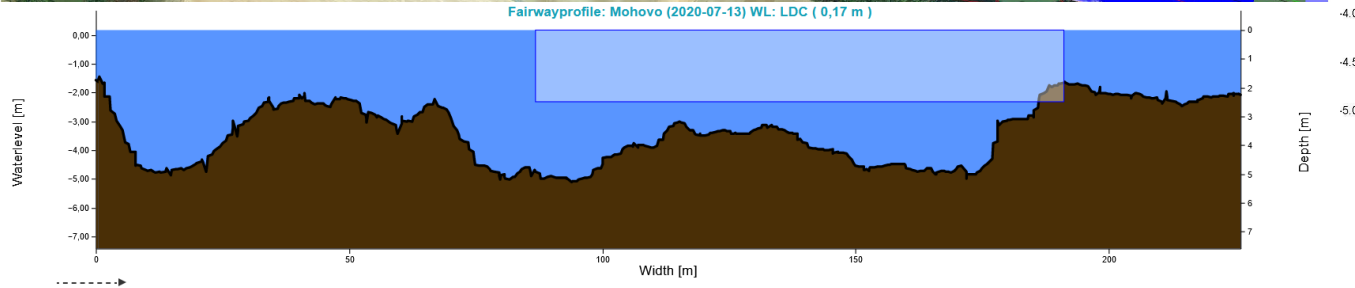
- 17 critical locations in total length of 76.4 rkm
- On most sections there is a problem with insufficient waterway width
- Mohovo → limited depth during LNWL



Mohovo sector



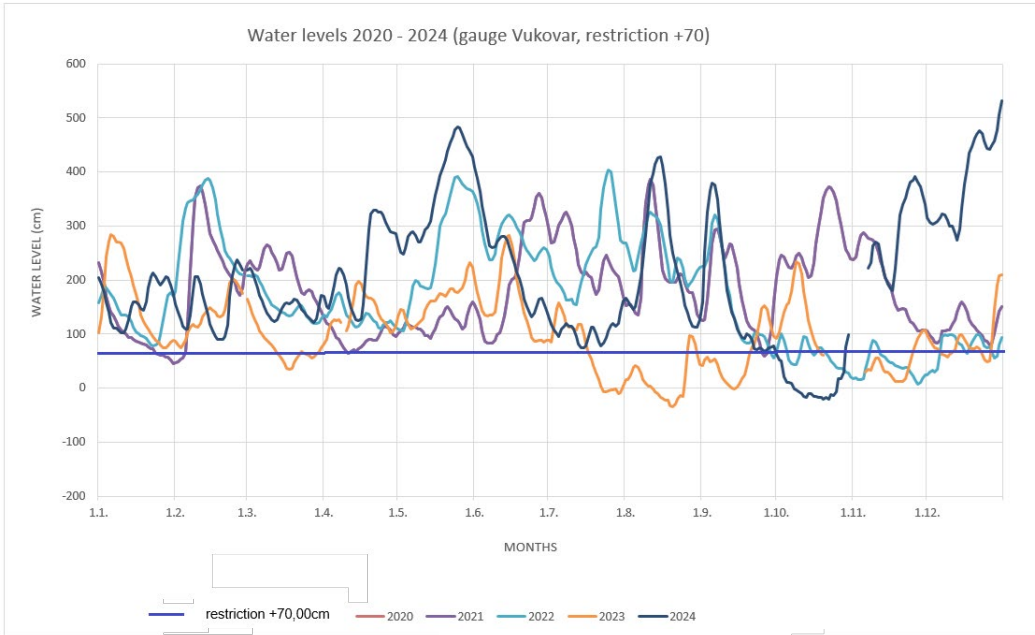
Fairwayprofile: Mohovo (2020-07-13) WL: LDC (0,17 m)



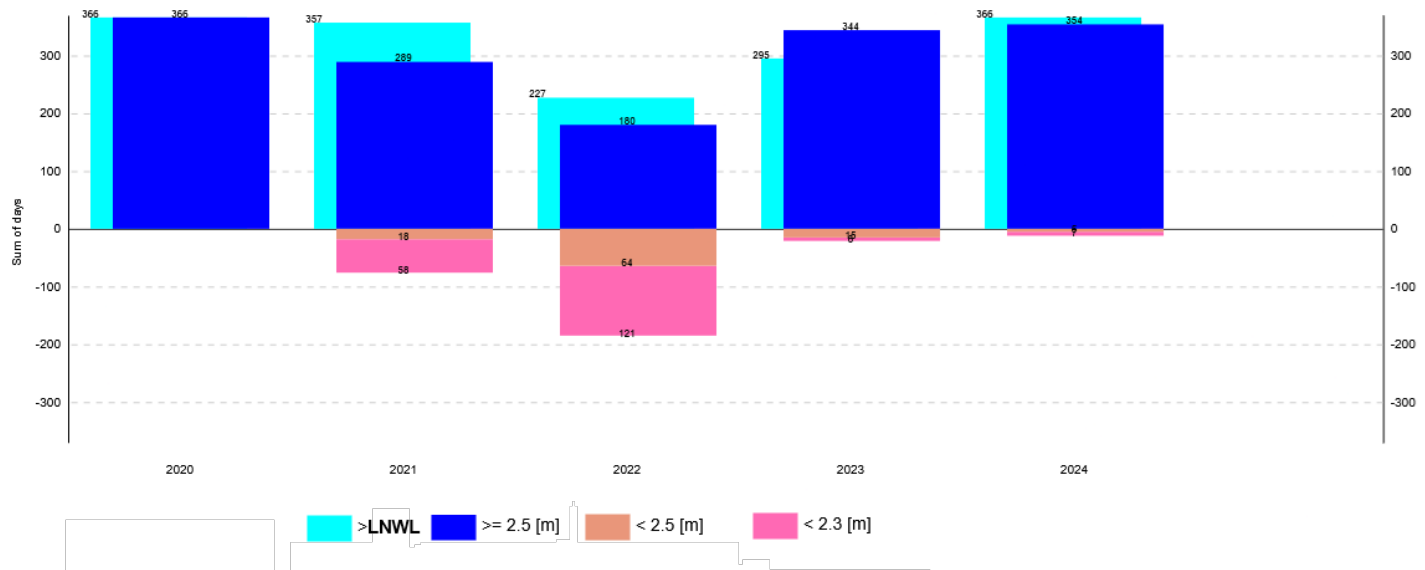
- Due to the rocky river bed fairway width is limited to 100m
- Navigable channel depth of 2.5m is ensured for water levels +70 and above on the Vukovar gauge



Mohovo sector



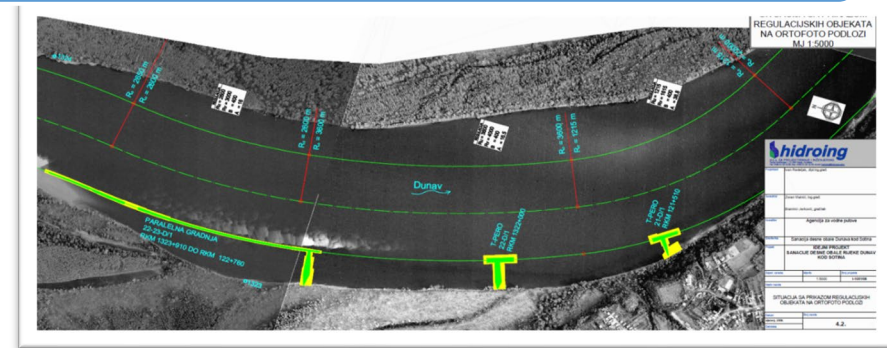
Available Fairway Depth: Mohovo (01. 01. 2020. - 31. 12. 2024.) yearly



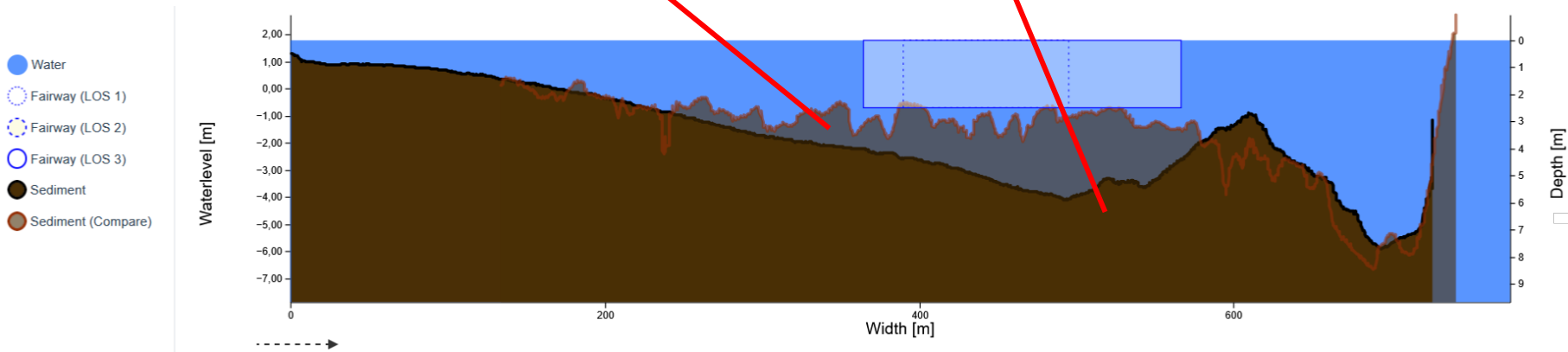
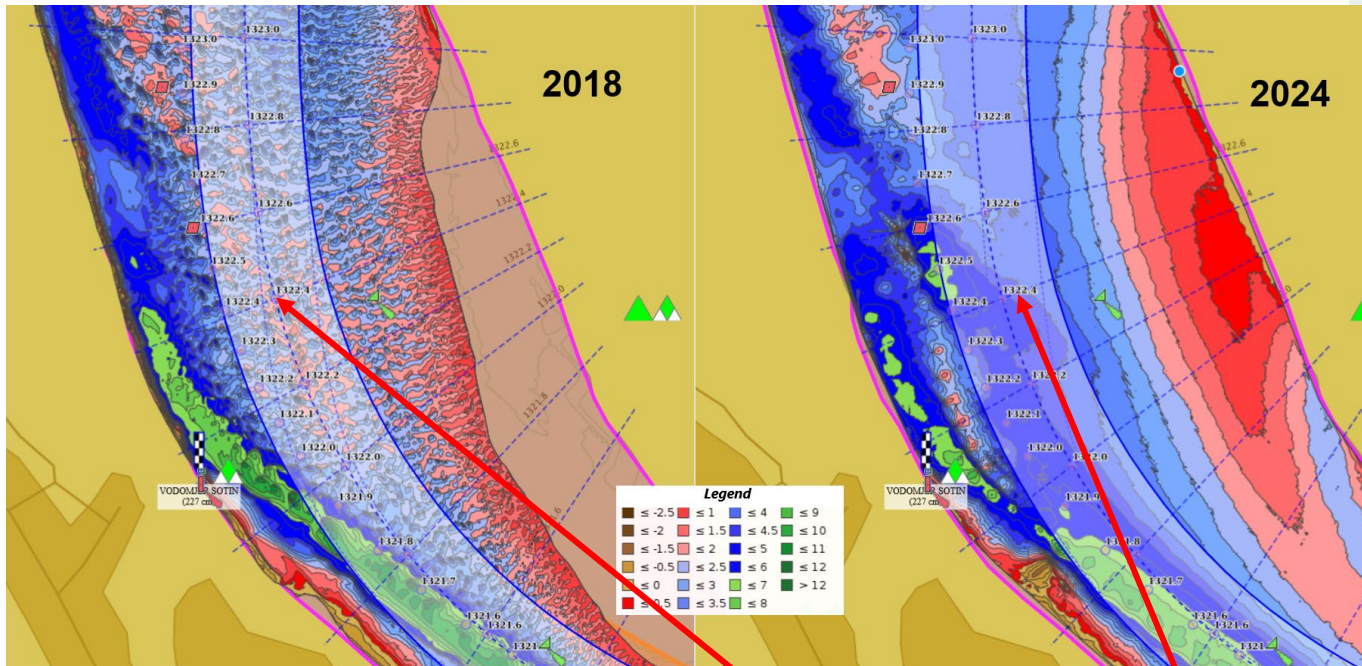
Sotin location

National OP – Sotin - regulation works on the Danube river on rkm 1322

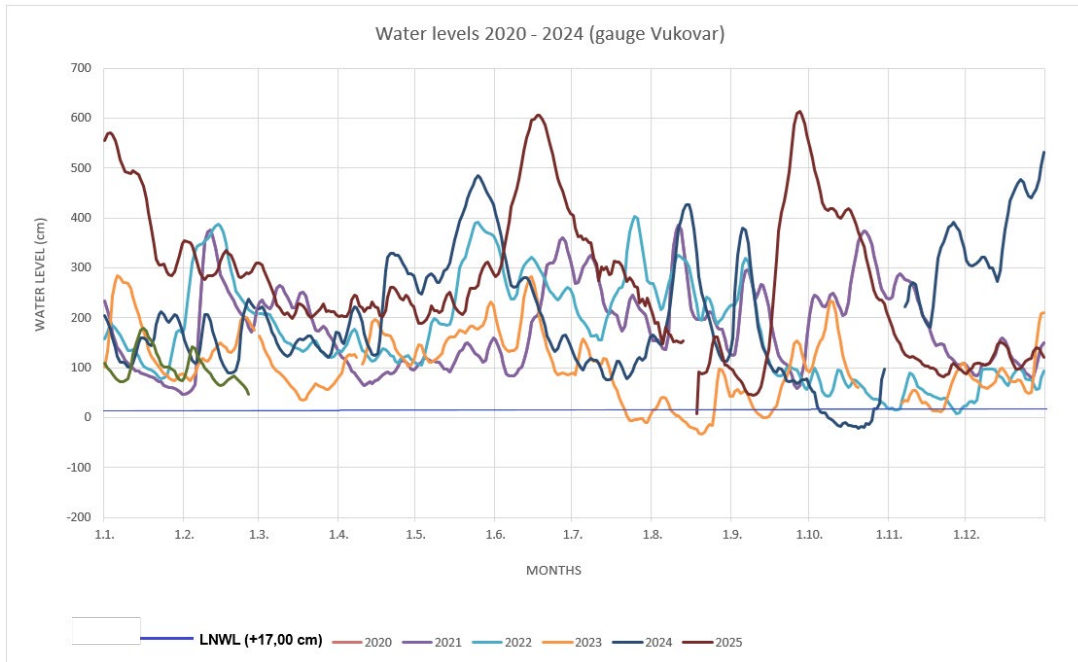
- 2/2020 – 12/2023
- App 3,5 mil €



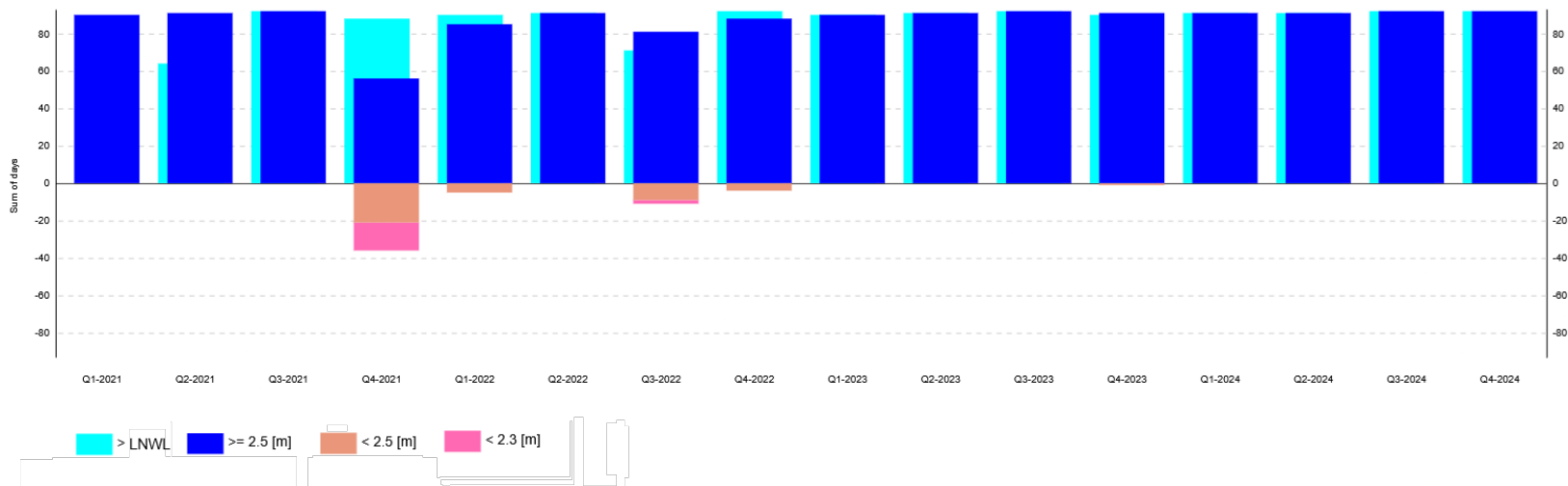
Sotin location 2020-2024



Sotin location 2020-2024



Available Fairway Depth: Sotin (01. 01. 2021. - 31. 12. 2024.) quarterly



Finalised activities in 2024 – Opatovac winter harbour (rkm 1314)

National OP

- 3/2020 – 09/2024

- App 4,2 mil€

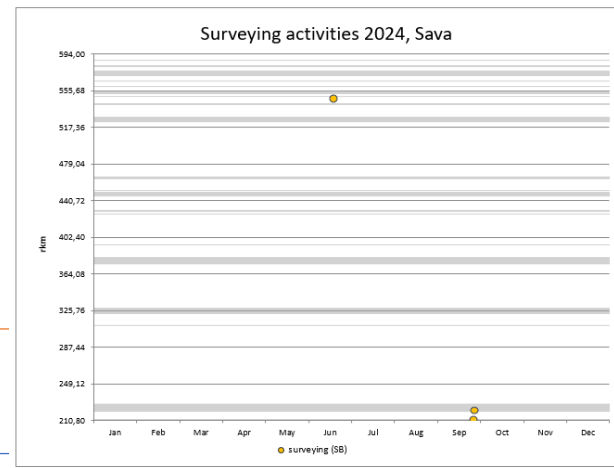
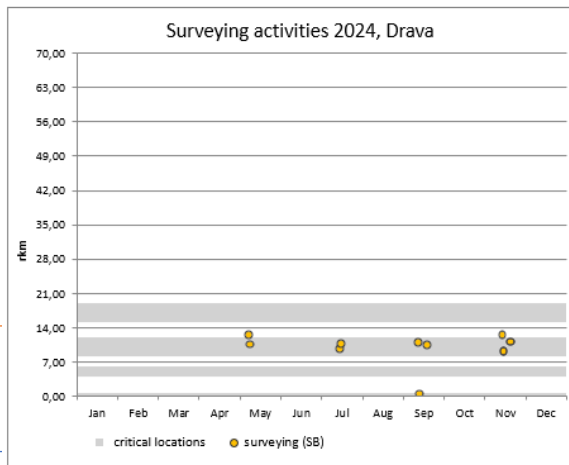
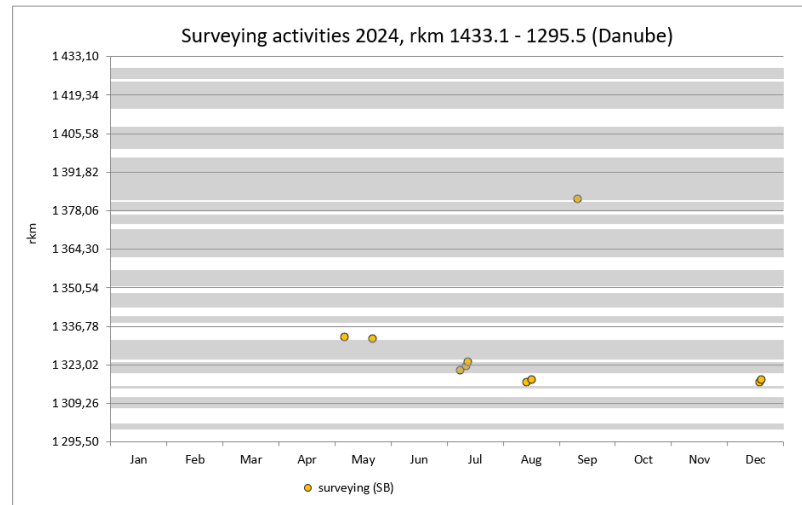
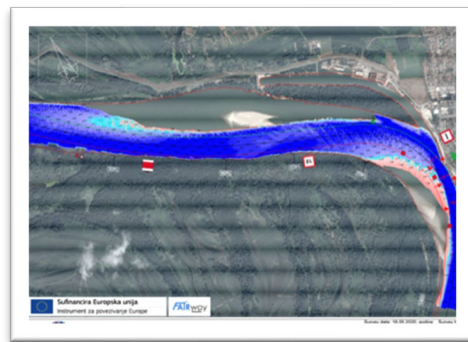
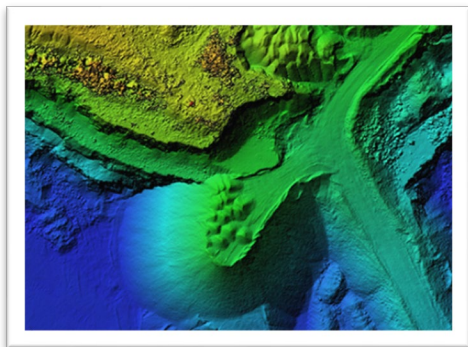
- First inland winter harbor in HR



Monitoring, rehabilitation and maintenance activities in 2024



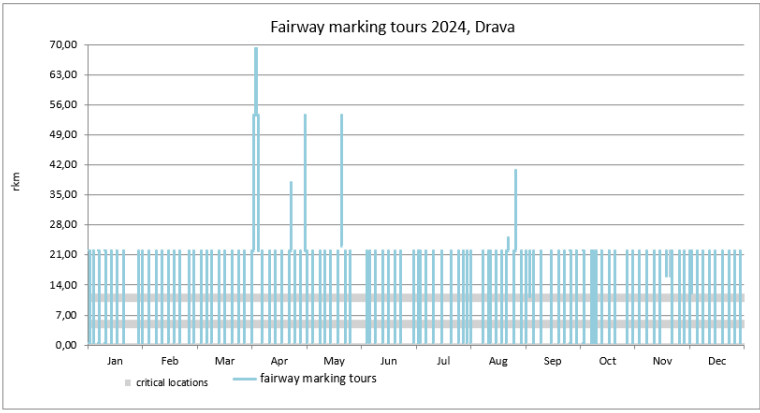
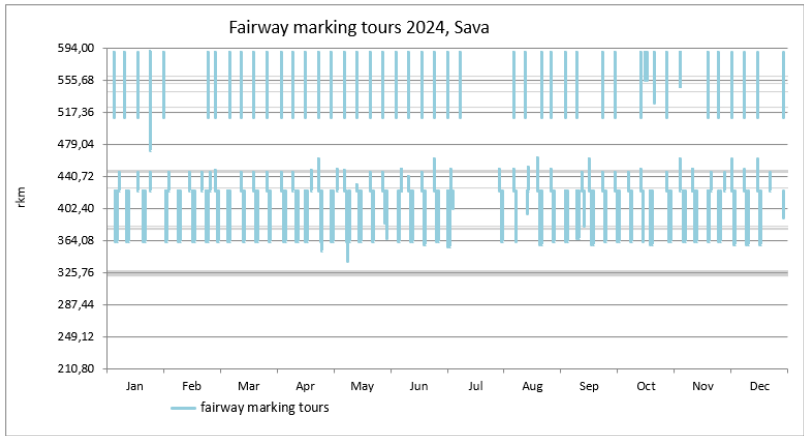
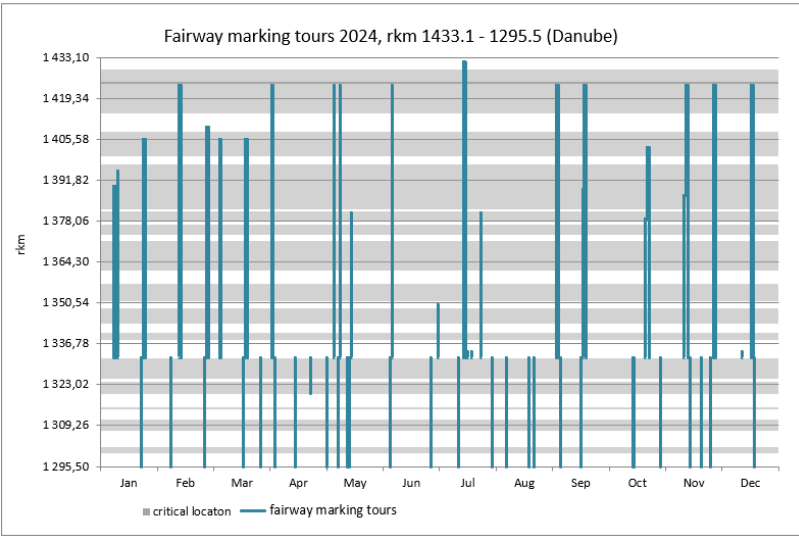
Monitoring activities - (bathymetric survey) were regularly performed on Danube, Drava and Sava rivers



Monitoring, rehabilitation and maintenance activities in 2024



Marking department provided regular services on all navigable rivers in HR



Monitoring, rehabilitation and maintenance activities in 2024

Maintenance activities (dredging) on Sava and Drava rivers

Dredging site			Dumping or placement site		Beginning of service	End of service	Material	Utilisation	m3	Permits needed (see next table)
Name of location	from river-km	to river-km	from river-km	to river-km						
Dolina (Sava)	445+50 0	448+00 0	445+50 0	448+00 0	01.01.2024	31.12.2024	Sand, dirt and gravel mixed	dumping	17.776,98	no
Davor II (Sava)	430+00 0	431+00 0	430+00 0	431+00 0	01.01.2024	01.07.2024	Dirt and gravel mixed	dumping	4.728,36	no
Lonja (Sava)	551+80 0	553+00 0	551+80 0	553+00 0	01.01.2024	01.07.2024	Sand and gravel mixed	dumping	24.423,82	no
Lonja - Strmen (Sava)	554+50 0	555+20 0	554+50 0	555+20 0	01.01.2024	01.07.2024	Sand and gravel mixed	dumping	21.168,13	no
Nemetin (Drava)	9+000	11+500	10+500 /13+87 0	11+200 /14+15 0	01.01.2024	01.02.2024	sand	dumping	10.457,23	no

Only intervention dredging!





**Thank you
for your
attention!**

*Ministry of the Sea, Transport and Infrastructure
Inland Navigation Directorate*

Lidija Hubalek

Parobrodarska 5

HR-32000 Vukovar

T +385 32 445 051

W <https://mmpi.gov.hr>

www.vodniputovi.hr



REPUBLIC OF CROATIA
Ministry of the Sea,
Transport and Infrastructure

REPUBLIC OF CROATIA
MINISTRY OF THE SEA, TRANSPORT AND INFRASTRUCTURE
Directorate for Inland Navigation

Inland Navigation in Croatia – planned activities

LIDIJA HUBALEK

Expert Meeting on Hydraulic Engineering, Budapest, 5th March 2025



REPUBLIC OF CROATIA
Ministry of the Sea,
Transport and Infrastructure

CONTENT

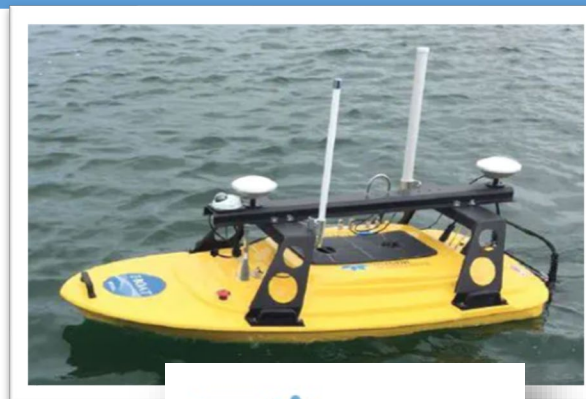
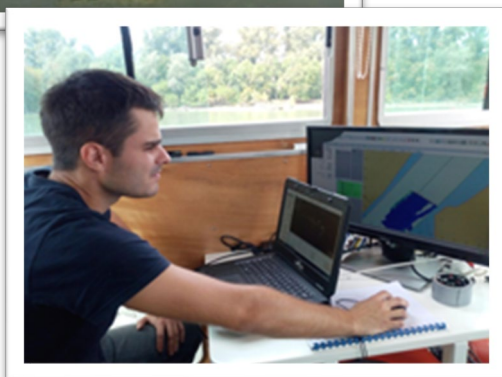
Planned activities in 2025

Operational expenditures for conducted activities in 2024 and budget needs in 2025

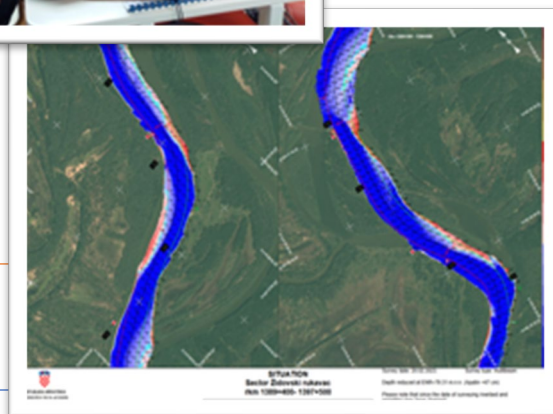


Planned activities in 2025

Monitoring activities - (bathymetric survey) on regular basis on all navigable rivers in Croatia



FAIRway
Danube



REPUBLIC OF CROATIA
Ministry of the Sea,
Transport and Infrastructure

Planned activities in 2025

Marking department regular services on all navigable rivers in Croatia



Danube river



Sava river



Drava river



Planned activities in 2025

Maintenance activities (dredging) on Sava and Drava rivers



Drava river



Sava river

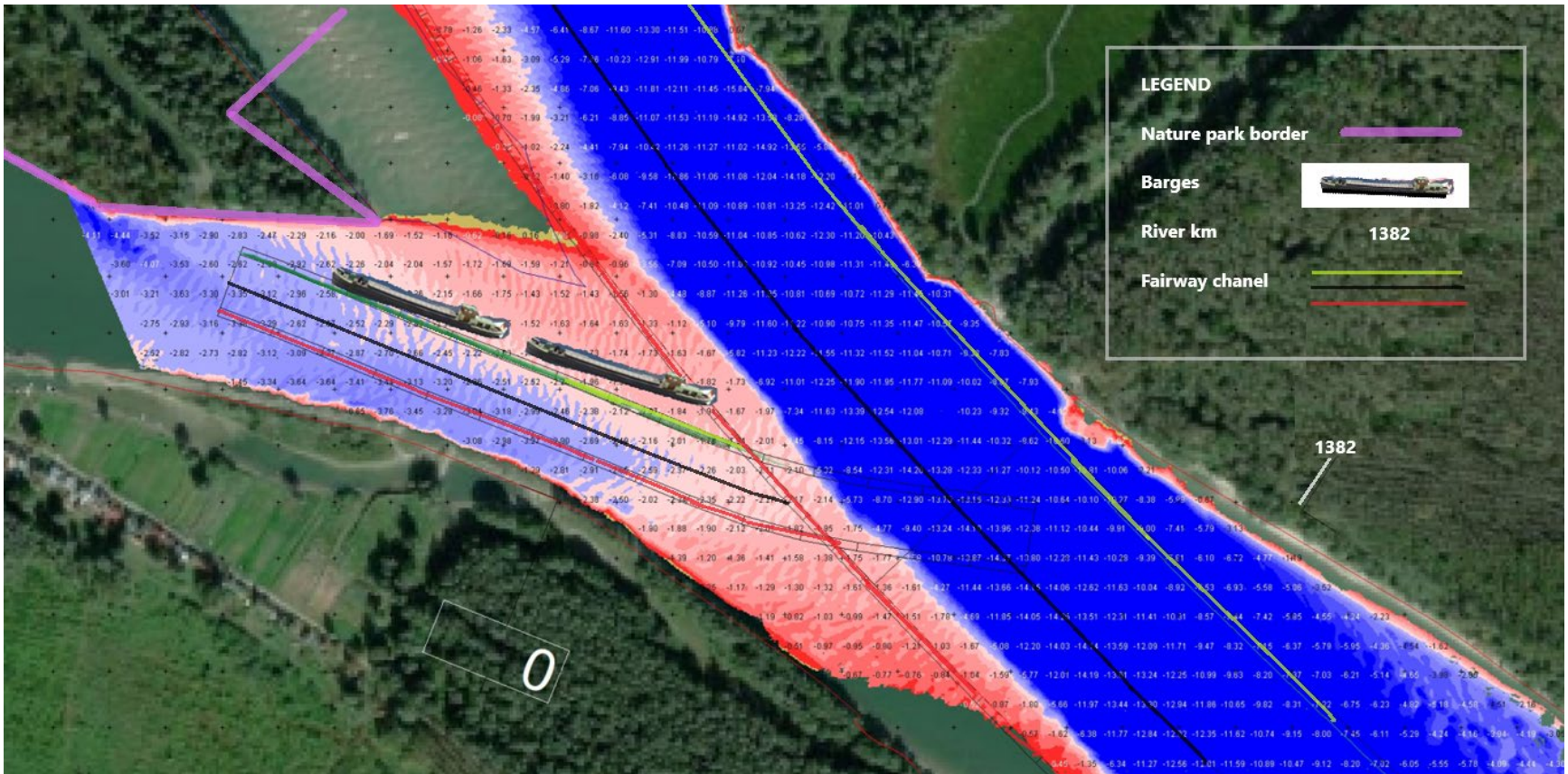


Only
intervention
dredging



Planned activities in 2025

Pilots of flexible infrastructure elements for enhancing low water resilience



Planned activities

CEf TRANSPORT
2024 Calls

€2.5 billion

available for
INFRASTRUCTURE PROJECTS

#ConnectingEurope #CEfTransport

© European Union, 2024 | Images: © iStockphoto | int © ylvadg | s, 2014 | Source: iStock, iStock.com

The graphic features a blue and green color scheme with circular icons representing various infrastructure projects: an airport control tower, a ship on a canal, a train, and a modern transit station. The European Union flag is also present in the bottom right corner.

- Works on Jaruge - Novi Grad critical sector (Sava river)
- Study and project documentation for Danube – Sava Canal
- Study and project documentation for Sava river



Operational expenditures for conducted activities in 2024 and budget needs in 2025

Need area	Operational expenditures 2024	Required operational budget 2025	Secured operational budget 2025	Remaining financing gap 2025
Minimum fairway parameters (width/depth) – maintenance dredging	1 200 000	1 400 000	1 400 000	0
Surveying of the riverbed	n/a	n/a	n/a	n/a
Water level gauges	17 000	14 000	14 000	0
Marking of the fairway	300 000	200 000	200 000	0
Availability of locks / lock chambers	n/a	n/a	n/a	n/a
Information on water levels and forecasts	30 000 (DHMZ)	30 000 (DHMZ)	30 000 (DHMZ)	0
Information on fairway depths	n/a	n/a	n/a	n/a
Information on marking plans	n/a	n/a	n/a	n/a
Meteorological information	5 000 (DHMZ)	5 000 (DHMZ)	5 000 (DHMZ)	0
Other needs	App 1 mil€	App 1.3 mil€	App 1.3 mil€	0
Sum (Euro)	2 552 000	2 949 000	2 949 000	0





**Thank you
for your
attention!**

*Ministry of the Sea, Transport and Infrastructure
Inland Navigation Directorate*

Lidija Hubalek

Parobrodarska 5

HR-32000 Vukovar

T +385 32 445 051

W <https://mmpi.gov.hr>

www.vodniputovi.hr



REPUBLIC OF CROATIA
Ministry of the Sea,
Transport and Infrastructure