



REPUBLIC OF TÜRKİYE
MINISTRY OF FOREIGN AFFAIRS
DIRECTORATE FOR EU AFFAIRS

PERSPECTIVES OF TÜRKİYE ON CONNECTIVITY

OUTLINE



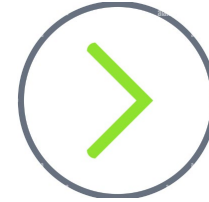
**GLOBAL
OUTLOOK &
EU AGENDA**



**SUPPLY
CHAINS**



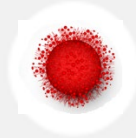
**TÜRKİYE'S
CORRIDOR-
ORIENTED
STRATEGIES**



**LOOKING
AHEAD**

GLOBAL OUTLOOK

never-ending series
of interconnected &
intertwined crises...



COVID-19



Climate Change



**Supply Chain Disruptions &
Energy Shortages**



Protectionism



Economic Recession

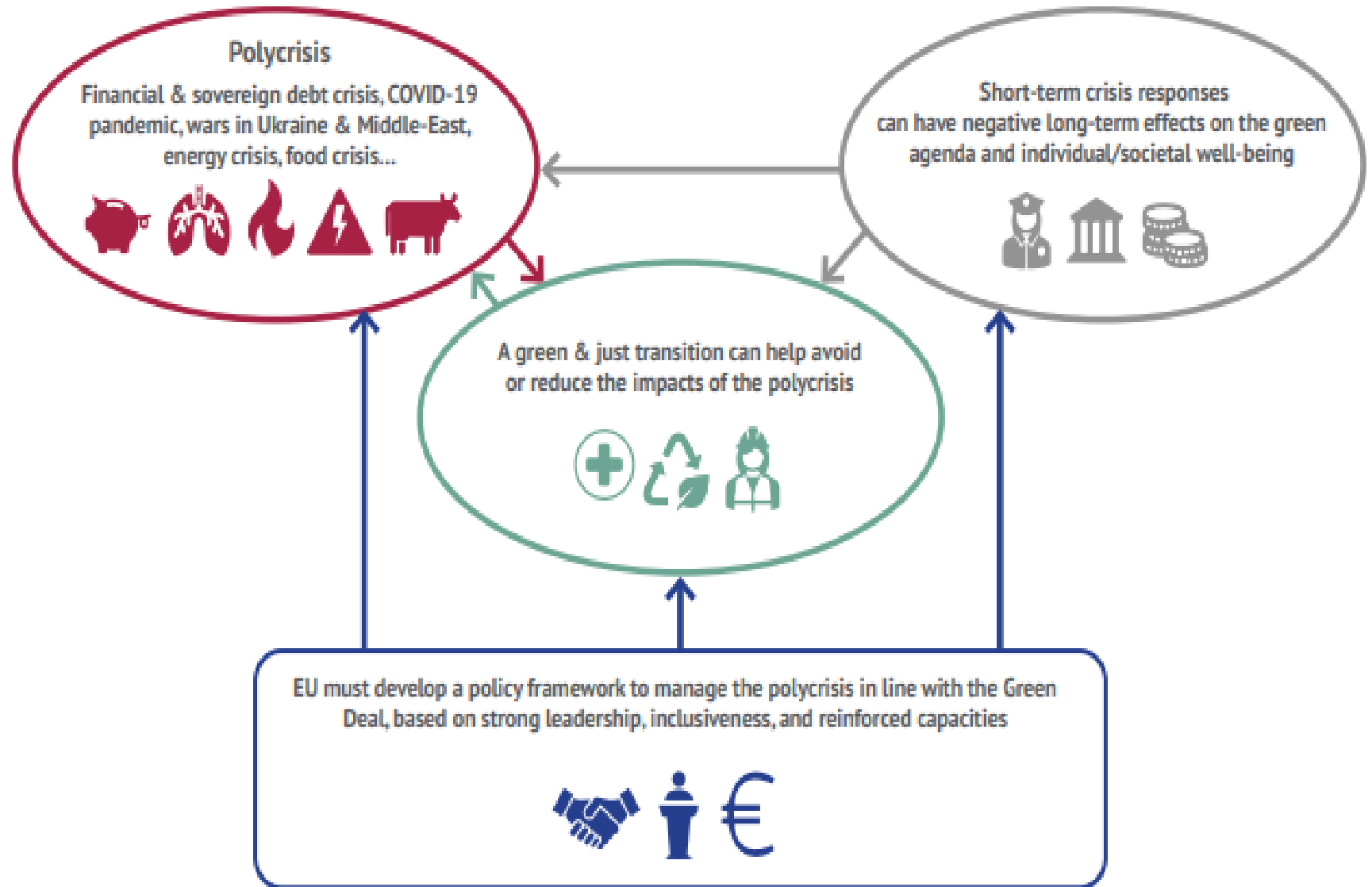


Geopolitical uncertainties



EU AGENDA

The Union has to master :
the transition towards
a climate-neutral economy alongside
strategic autonomy
&
greater sovereignty in
supply chains,
transport & energy
corridors and supply of
critical raw materials.



GLOBAL SUPPLY CHAINS

- Supply chains have been “going East” for several decades.
 - Belt & Road Initiative Vs B3W & Global Gateway
 - COVID 19: lockdowns & enormous increase in freight prices.
 - Conflict in Ukraine & quest for alternative corridors.
 - Assaults on commercial vessels in the Red Sea & pressure on ocean freight rates.
 - Changing sourcing strategies & Nearshoring
-

CHANGING SOURCING STRATEGIES

Globally attractive sourcing locations

#	COUNTRY	%
1	Vietnam	21.2%
2	India	20.7%
3	Germany	13.7%
4	Poland	13.3%
5	United States	12.4%
6	China	9.1%
7	Mexico	9.1%
8	Türkiye	9.1%
9	United Kingdom	7.5%
10	Indonesia	7.1%
11	Romania	5.8%
12	France	5.4%
13	Bangladesh	4.6%
14	Hungary	4.6%
15	Italy	4.6%

«A generational shift in sourcing strategy»

The most attractive individual countries for near-sourcing

Most popular sourcing locations for European companies

#	COUNTRY	%
1	Poland	23.3%
2	Germany	19.4%
3	Türkiye	12.4%
4	United Kingdom	10.9%
5	United States	10.1%
6	Vietnam	10.1%
7	France	8.5%
8	Romania	8.5%
9	Czech Republic	7.8%
10	India	7.8%
11	China	7.0%
12	Hungary	7.0%
13	Italy	6.2%
14	Mexico	6.2%

DOMESTIC + ACCESSIBLE MARKETS

DOMESTIC MARKET + EU MARKET + FREE TRADE AREA

Customs Union
with the EU allows
direct access to the
EU Market



STRATEGIC LOCATION İSTANBUL AS A MEGA HUB

Wide Body Range

B777 Range
~14 Hours

Narrow Body Range
~2 Hours

~5 Hours

~10 Hours

~12 Hours

A330F Range

B777F Range

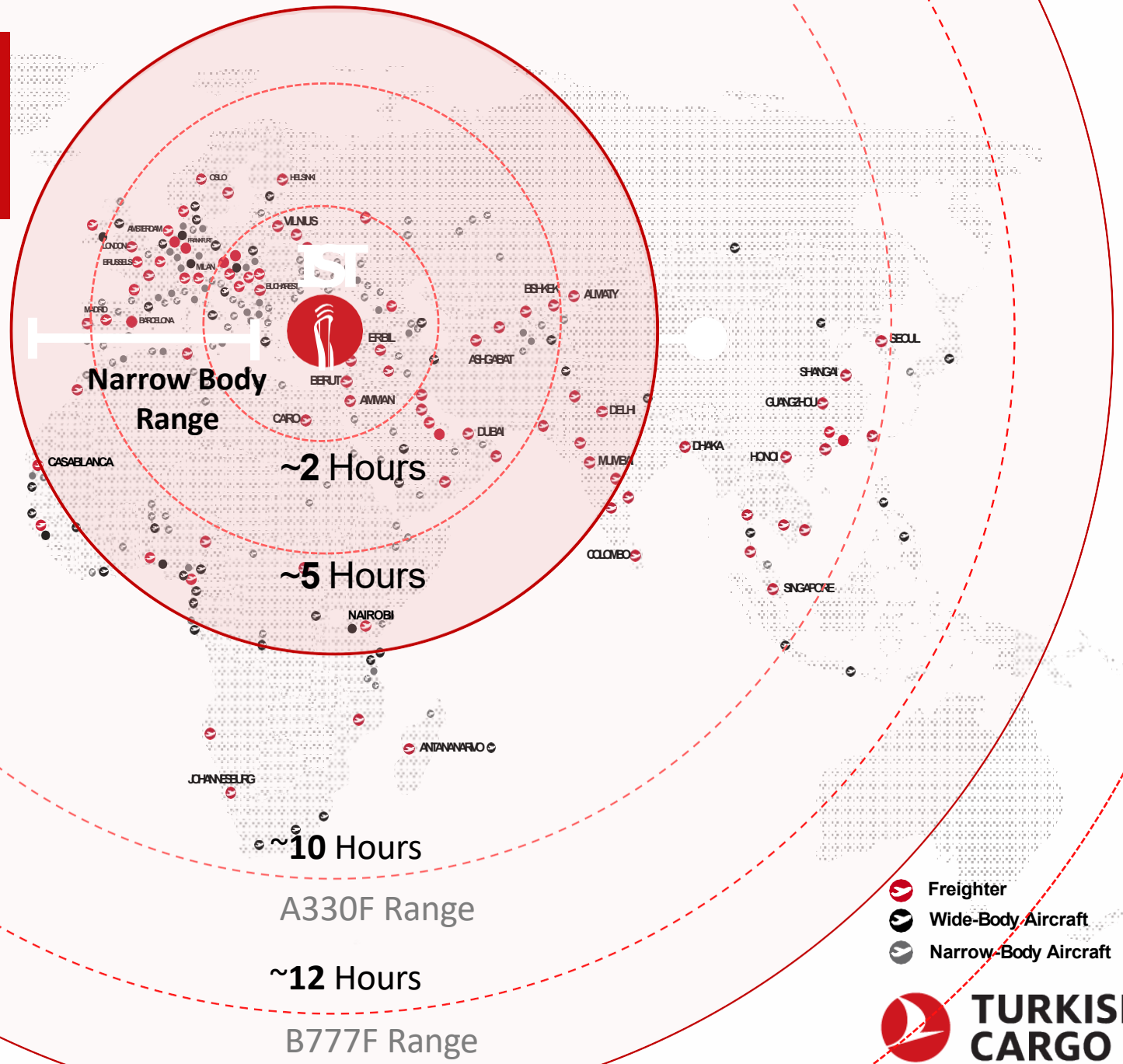
Fleet

294 Narrow Body
119 Wide Body
24 Freighter

104 freighter destinations
It is expected to reach 120 destinations by 2028

In 4 hours flight distance:
▪ Over 50 capitals

- Freighter
- Wide-Body Aircraft
- Narrow-Body Aircraft



STRATEGIC LOCATION

*Hub for multinationals
to manufacture export and manage*

Working Hours
Intersect with
16 Time Zones

PROXIMITY TO MAJOR MARKETS
1.3 billion people and \$28T GDP in Europe, MENA and Central Asia at 4 hour flight-distance

CONNECTIVITY
Turkish Airlines connects you to 342 destinations in 129 countries

MANUFACTURING & EXPORT HUB FOR MULTINATIONALS

MANAGEMENT HUB FOR MULTINATIONALS

Cargill
66 countries

Microsoft
70 countries

Nestlé
Production base for MENA

BOSS HUGO BOSS
Its largest production facility worldwide

B/S/H/
89 countries

GE Healthcare
22 countries

RENAULT
Exporting 75% of its production

KNAUF
80 countries

TOYOTA
Exporting 85% of its production

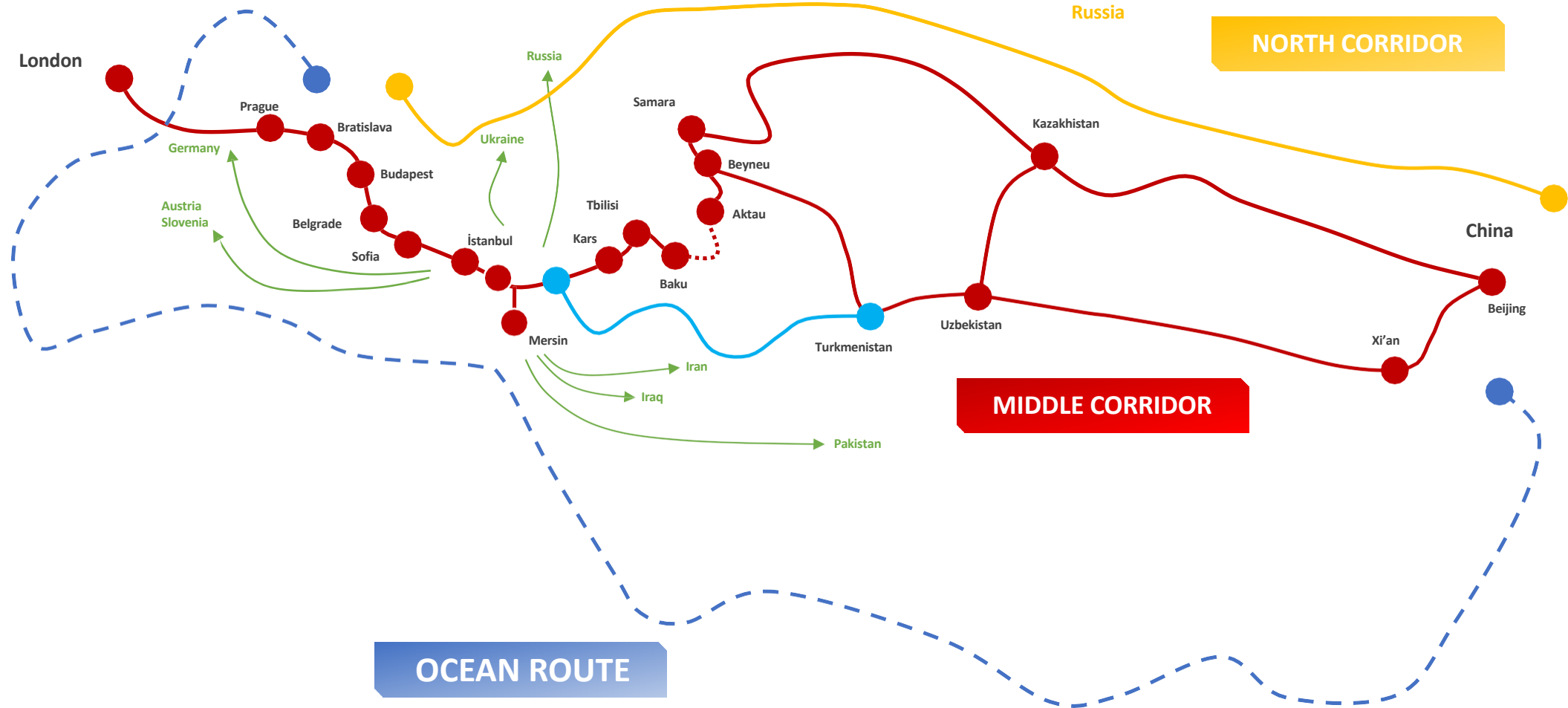
Ford
Exporting 87% of its production

SANOFI
14 countries

gsk
30 countries

TRANS-CASPIAN MIDDLE CORRIDOR

THE MIDDLE CORRIDOR AS A RELIABLE
TRADE ROUTE BETWEEN EUROPE AND ASIA



TRANS-CASPIAN MIDDLE CORRIDOR

EU Global Gateway and Trans-Caspian Middle Corridor

Sustainable transport connections
between Europe and Central Asia



Final Report
Submitted on 16/06/2023



Prepared by:
The European Bank for Reconstruction and Development (EBRD)

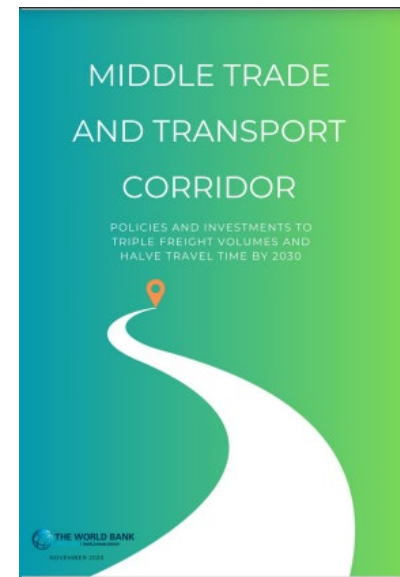
Funded by:
The European Union

Contract Number: ADA/2020/414-374
The contents of this publication reflect the opinions of the individual authoring departments of the EBRD and do not necessarily reflect the views of the EBRD or the EU. The designations employed and the presentation of material in the maps do not imply the expression of any opinion whatsoever on the part of the EBRD or the EU concerning the legal or constitutional status of any country, territory or sea area, or concerning the delimitation of frontiers. Information is valid as of 9 June 2023.



Investments into regulatory and infrastructure connectivity (€18.5 billion) will increase container traffic from ~100.000 TEU to 865.000 TEU with less than 13 days transit (Asia to Europe) by 2040

With a combination of investments and policy interventions, Middle Corridor can triple its volumes by 2030 compared to 2021, while halving transport times.



TRANS-CASPIAN MIDDLE CORRIDOR

Prioritizing cooperation and shared gains over competition,

Türkiye:

- **Center of the Middle Corridor** (*geography, key economic and political power*)
- **Open to multilateralism and balanced foreign policy** (*mediator in crises*)
- **Bilateral and multilateral cooperation initiatives**
(*Bulgaria-Hungary-Serbia-Türkiye Quadrilateral Ministerial Coordination Council, TITR, OTS*)
- **Navigating the complex geopolitical landscape of Eurasia:** *three decades-long experience working with the Central Asian countries*
- **A key trade partner and candidate state of the EU,** *EU standards of business are internalized.*

« Perceiving corridors as Complementary rather than Alternatives »

TRANS-CASPIAN MIDDLE CORRIDOR

*A resilient and secure route
for regional and
intercontinental trade...*

INFRASTRUCTURE INVESTMENTS

Modernization of railways,
intermodal and maritime facilities

EFFICIENCY MEASURES

Improved coordination,
logistics, and digitalization

**Baku-Tbilisi-Kars Railway Expansion
Completed:
Boosting Cargo Volume**



ZENGEZUR CORRIDOR



DEVELOPMENT ROAD

TRANSPORTING THE CARGO OF INDIA, EAST ASIA AND THE PERSIAN GULF TO EUROPE VIA IRAQ



REPUBLIC OF TÜRKİYE INVESTMENTS

615 KM
Railway

320 KM
Highway

7,8 Billion \$
Total Investment

REPUBLIC OF IRAQ INVESTMENTS

1200 KM
Railway + Highway

2X3
Highway

16 Billion \$
Total Investment

ANNUAL CAPACITY

4.7 Million
TEU Container

28,5 Million Ton
Bulk Cargo

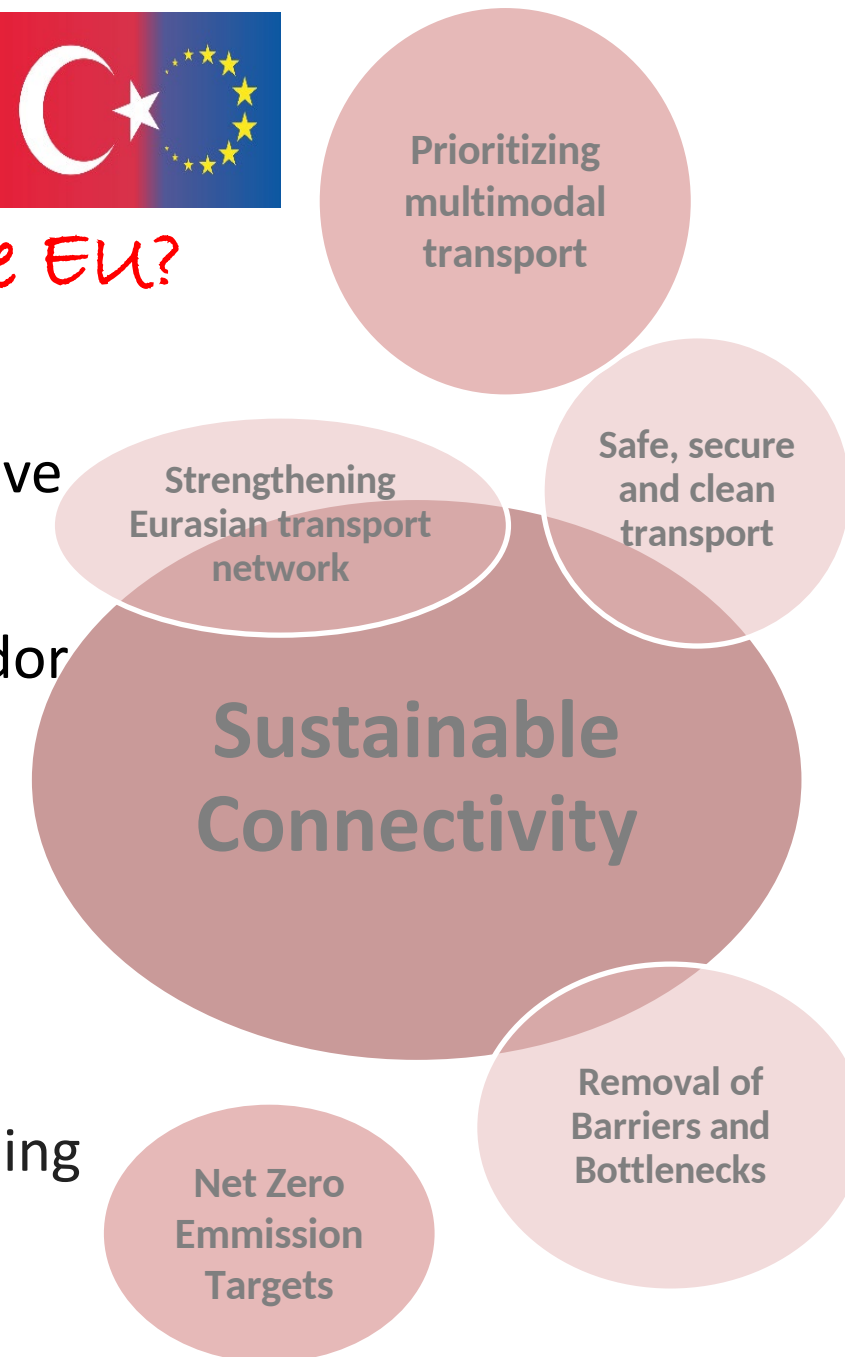
LOOKING AHEAD



Can Connectivity Reconnect Türkiye and the EU?

For strengthening connectivity and supply chain resilience:

- Extending TEN-T networks to Türkiye: Core and Comprehensive networks of Türkiye to be included in the TEN-T Regulation.
- Better connection among Rhine-Danube Core Network Corridor & Orient-East Med Corridor & Türkiye.
- EIB investments, Customs Union Reform
- A holistic approach in Global Gateway to unlock the full potential of the corridor
- Strengthening links between the EU & OTS during the upcoming Hungarian Presidency.



THANK YOU FOR YOUR ATTENTION

Selen GÜNEL SUSUZ