



TTS GROUP

Integrated logistics solutions
on the Danube
Since 1997



GEOGRAPHY OF TTS NETWORK

- Freight forwarding
 - River transport
 - Port operations
 - Logistics management services, in any combination
-
- Agriculture products
 - Metals & minerals
 - Fertilizers

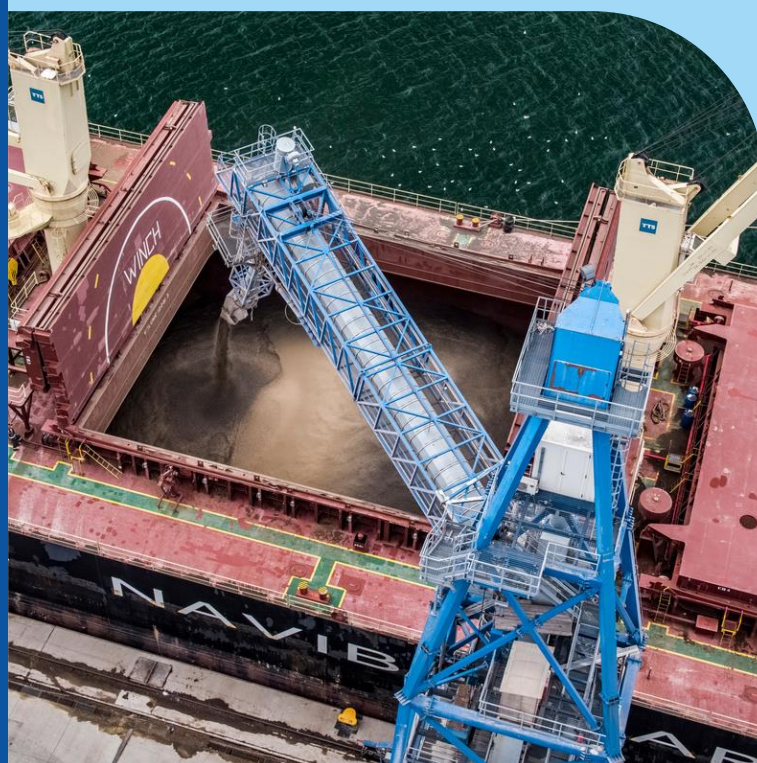




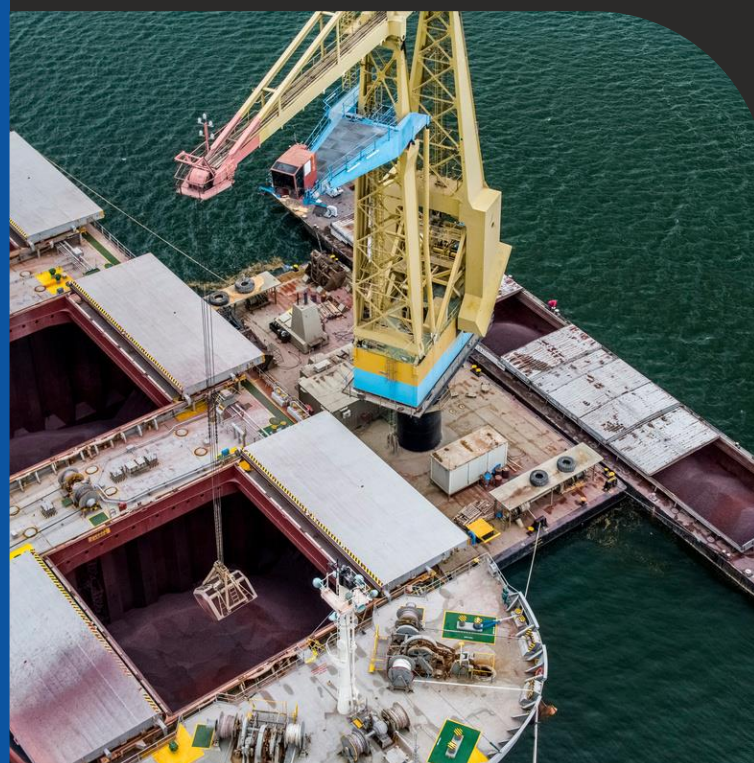
WHO WE ARE

Constanta Port

CANOPUS
GRAIN TERMINAL



TTS OPERATOR



DECIROM
GENERAL CARGO TERMINAL

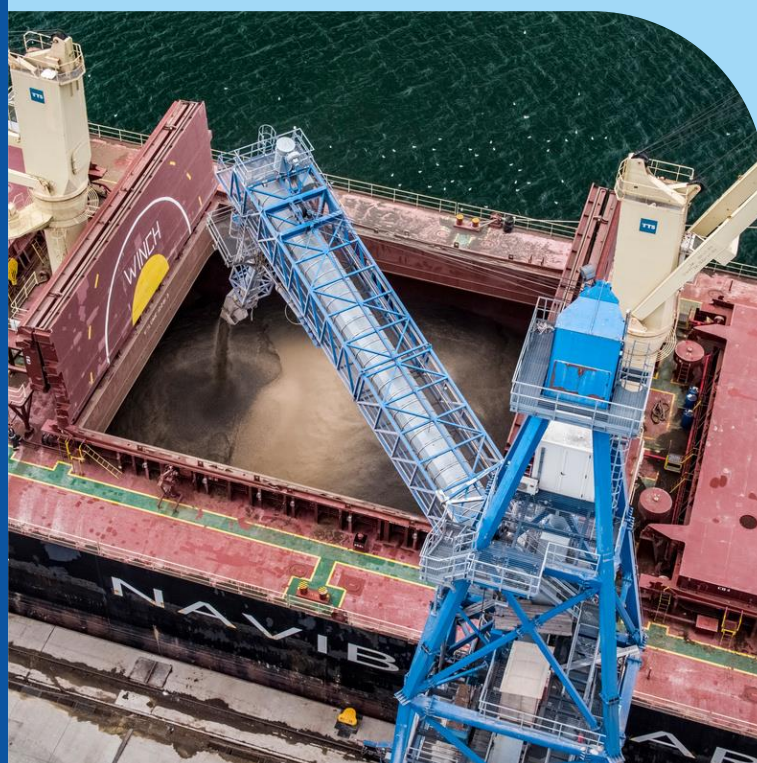




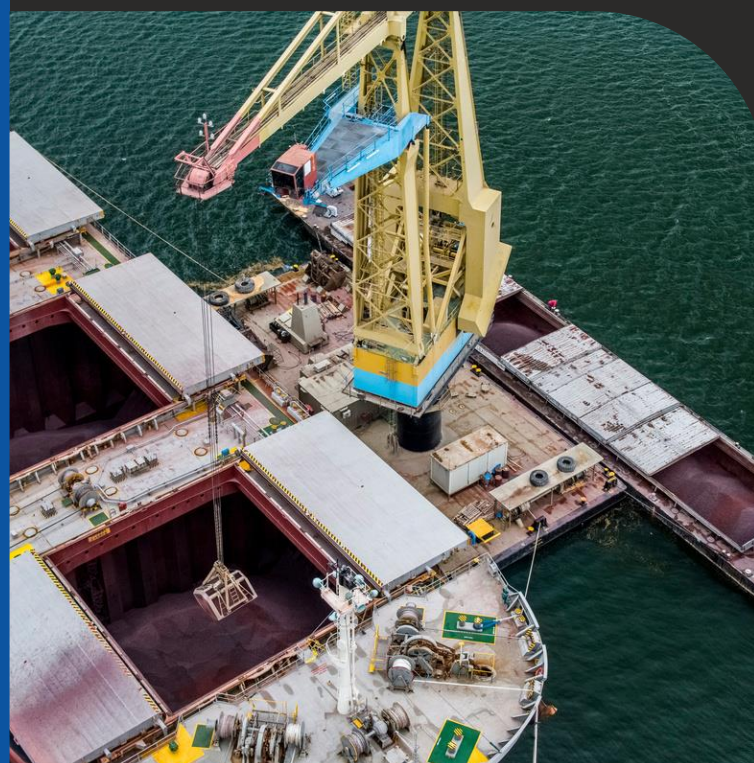
WHO WE ARE

Constanta Port

CANOPUS
GRAIN TERMINAL



TTS OPERATOR



DECIROM
GENERAL CARGO TERMINAL



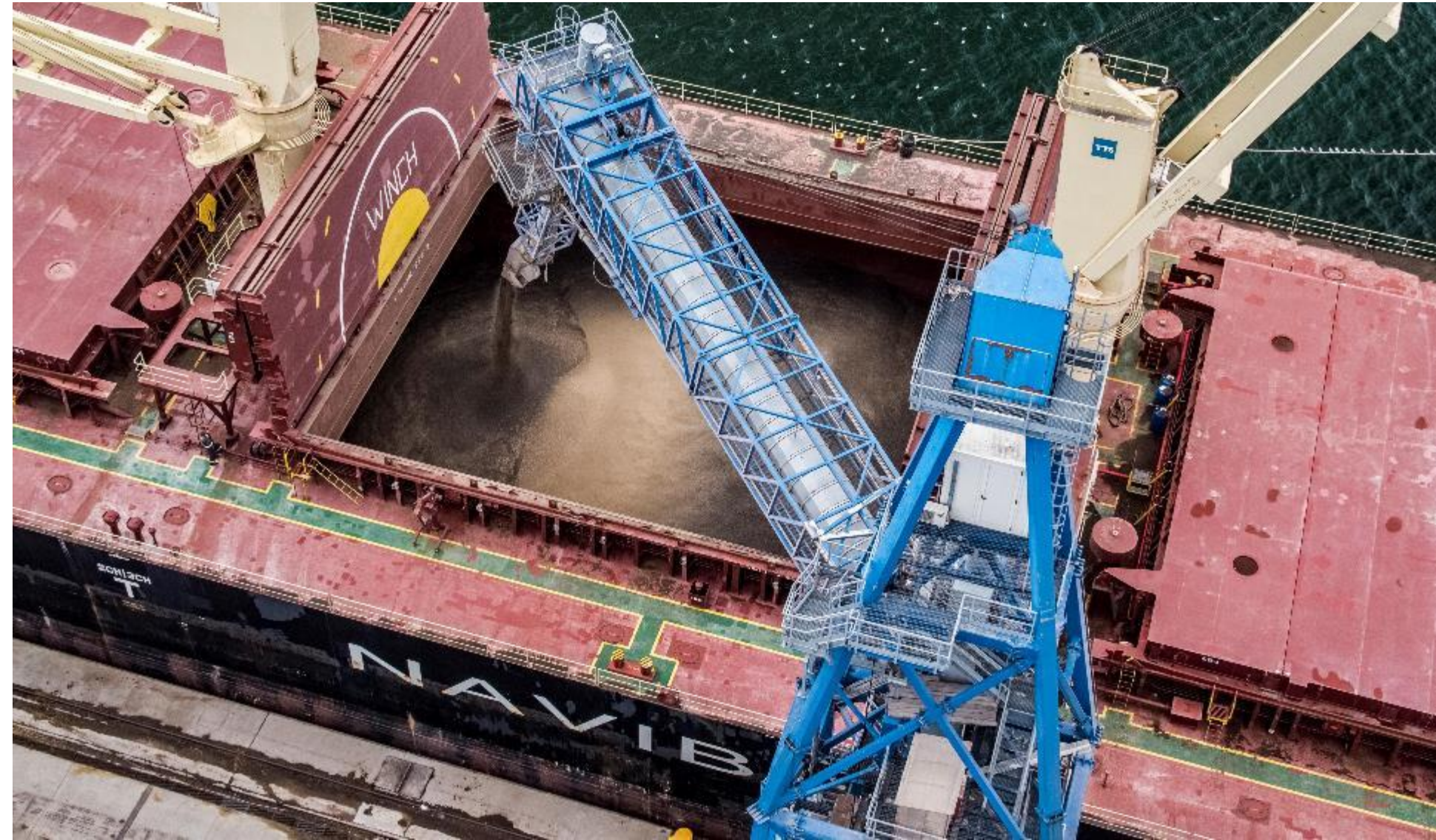


CANOPUS GRAIN TERMINAL

Storage capacity: 110 000 to
rail/truck/river/sea connections

- Quay length: 320 m
- Draft: 13.50 m (Panamax vessels)
- 2 Ship Loaders
- 1 Gottwald crane







TTS OPERATOR

Direct transshipment anywhere in the port

2 buoy systems for direct transshipment
from/to panamax and cape size vessels

- floating storage capacity of 5000 - 5500 to
- 8 floating cranes







DECIROM

General cargo terminal

rail/truck/river/sea connections

- 4 deep water berths(panamax vessel)
- 2 berths for smaller vessels
- open platform storage
- warehouse storage
- bagging installation for bulk cargo





DANUBE PORTS

- 7 port terminals: Galati, Braila, Oltenita, Giurgiu, Bechet, Severin, Fajsz
- 40 000 sqm of open storage capacity
- 5 500 Sqm of covered storage capacity
- 42 000 tons silo storage capacity
- Rail/truck connections, bagging installation



TRANS EUROPA PORT SA



RIVER FLEET

- 800 000 to transport capacity
- 450 barges
- 50 pushers
- 5 self-propelled vessels

4 new built Europa IIB barges
in operation

4 new Europa IIB barges to be
delivered this year





Large red rectangular panels or structures on the barge deck.

Two workers in blue protective suits standing on the red barge deck.

One worker in a blue suit standing near the red panels.

White superstructure of the barge with windows and a satellite dish.

Blue roof structure of an industrial building in the background.

Yellow industrial cranes and structures at the pier.

52t

Grey barge in the foreground with various mechanical components and a blue winch.

Blue mechanical winch and pulley system on the grey barge.

Small white sign with text on the grey barge.

Small white sign with text on the grey barge.



MULTIMODAL

Moving of goods from inland production facilities to seaports



Inland transport

Transport from the factory to nearby river port



Port operations

Transship from truck/rail to river vessel



Water transport

River vessel to Port of Constanta



LET'S TALK and collaborate

WEBSITE

www.tts-group.ro

CALL US

+40 21 210 29 07

SEND US AN EMAIL

razvan.banica@tts-group.ro