



# **PUBLIC COMPANY "LUKA BRČKO" D.O.O.**

**Public Company "Luka Brčko" d.o.o., under this name, has been operating since 2004, and the founder of the company is the Brčko District of Bosnia and Herzegovina. By the decision of the Council of Ministers of Bosnia and Herzegovina on September 14, 2006, the Port received the status of the only international river port in Bosnia and Herzegovina. The company provides services in river, river-rail and other combined traffic to legal and natural persons from Bosnia and Herzegovina and abroad. The port is located in an ideal location, almost equidistant from the three industrial, economic and political centers in the region (Sarajevo, Zagreb and Belgrade), and is capable of transshipment of bulk cargo, mainly coal, then grain and iron.**

# Location & Services

## Geographical position

The Port of Brcko is located in an ideal location, almost equidistant from the three industrial, economic and political centers in the region (Sarajevo, Zagreb and Belgrade). This location provides a strategic advantage for trade and transportation in the region.

## Services

The company provides services in river, river - rail and other combined traffic to business and private individuals from Bosnia and Herzegovina and abroad. The port is equipped for transshipment of bulk cargo, mostly coal, grain and iron products.

## Connectivity

Through the Port of Brčko, it is possible to establish direct trade flows along the Sava River with the Danube ports of Western and Eastern Europe, as well as with ports on the North and Black Seas. This connection opens opportunities for trade expansion and economic development.

# The role of Brčko Port

## 1 Multimodal Transport

Purpose of existence, work and development of JP "Luka Brčko" d.o.o. Brčko District of BiH is reflected in the fulfillment of a significant role in the multimodal transport of goods.

## 2

## Transshipment Center

Brčko Port is an important transshipment and transport and distribution center in the region and is the backbone of the development and improvement of the transport system in Bosnia and Herzegovina.

## 3

## Economic Development

Brčko Port is a key factor in the development of the economy of Brčko District and the whole of Bosnia and Herzegovina. It enables efficient transport of goods and contributes to the growth of trade and industry.



# Transport Connectivity

## Railway Connectivity

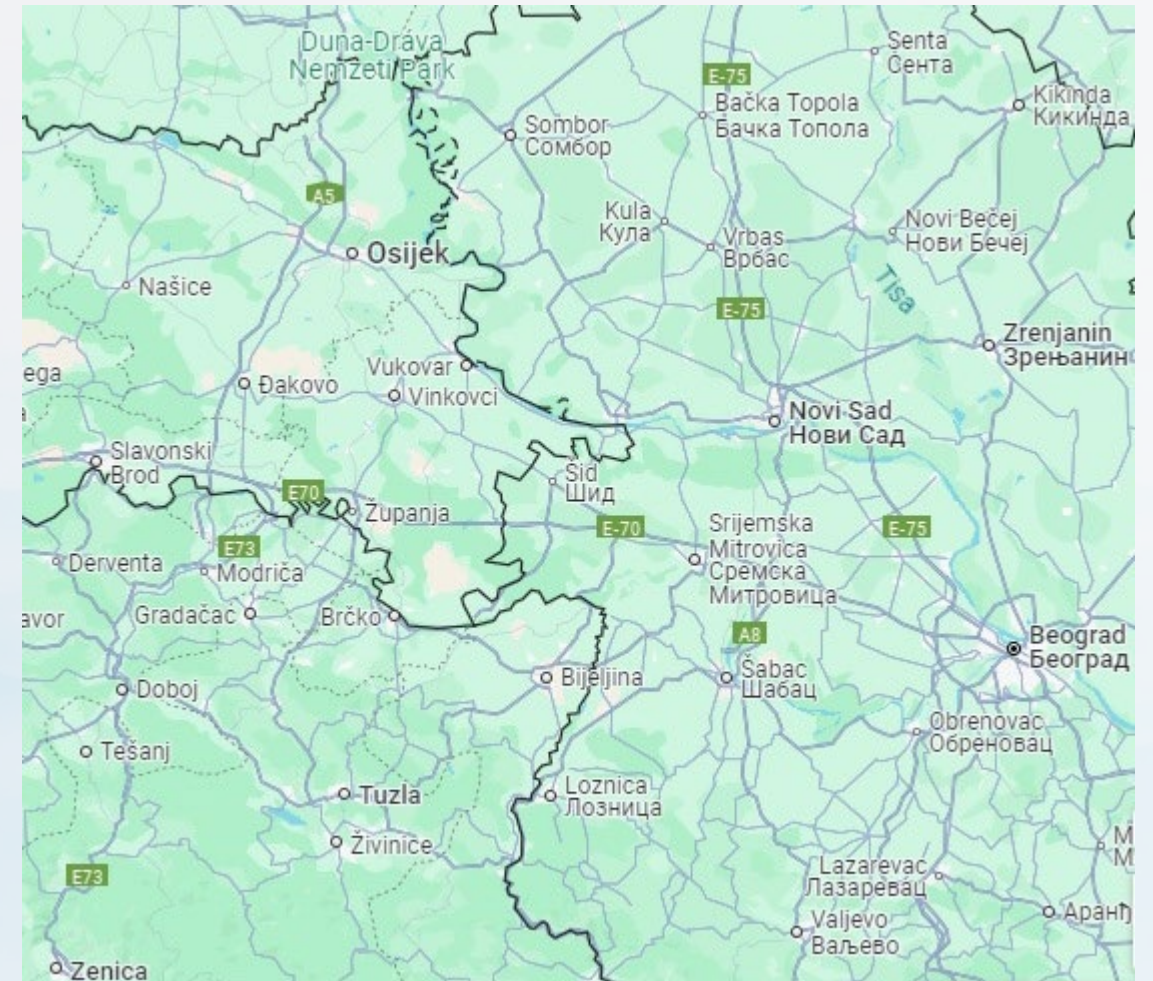
Brčko Port is connected to the European railway network by the Tuzla - Vinkovci road. This connection enables efficient transport of goods by rail.

## Highway Connectivity

In the immediate vicinity of Brčko Port is the Zagreb - Belgrade highway (European Corridor X) as well as the main road (M 14.1.). This connection facilitates the transportation of goods by trucks.

## Future Development

And this type of traffic will soon be improved by the construction of highways that will connect Bijeljina - Brčko - Banja Luka - Sarajevo, which will have a positive effect on the work of the Port of Brčko .



# Revitalization of Brčko Port



Photos of the Port before the revitalization



# Revitalization of Brčko Port



## Revitalization process

Photos of the Port during the revitalization process



# Revitalization of Brčko Port



## Revitalization process

Photos of the Port during the revitalization process





# Partnership for Revitalization

1

## Signing of the Agreement

Brčko District of Bosnia and Herzegovina, Public Company "Luka Brčko" d.o.o. and the European Bank for Reconstruction and Development (EBRD) are 24.09.2019. signed the "Port of Brčko" project contract in 2008, which means that Port of Brčko enters the process of revitalizing its capacities.

2

## The goal of Revitalization

The revitalization of the Port of Brčko will complete one of the most important infrastructure projects, which will allow the Port's capacities to be fully utilized in such a way that the economy of the District of Brčko and the whole of Bosnia and Herzegovina will develop in such a way that cheaper transport services will be used, thus enabling the Port to improve its business .

3

## Financing of the Project

The project was financed in the amount of 10 million euros in loan funds, plus 3 million euros allocated as grant funds.



# Phases of Revitalization

1

## I Phase

The reconstruction of the plateau with the drainage of rainwater on the operational coast, which represents the first phase and it was fully completed within the stipulated period (I phase);

2

## II Phase

The purchase of a port manipulative crane with a capacity of 27 tons with a crane and a length of 33 meters represents the second phase in the modernization and revitalization process, which will be finalized at the beginning of next year - the reason for the non-completion of the second phase in the planned period (September 2022) is the war events in Ukraine (II phase);

3

## III Phase

Reconstruction of the access road as well as the railway to the train station Novo Brčko (Phase III).





# The Port of Brčko in a new look



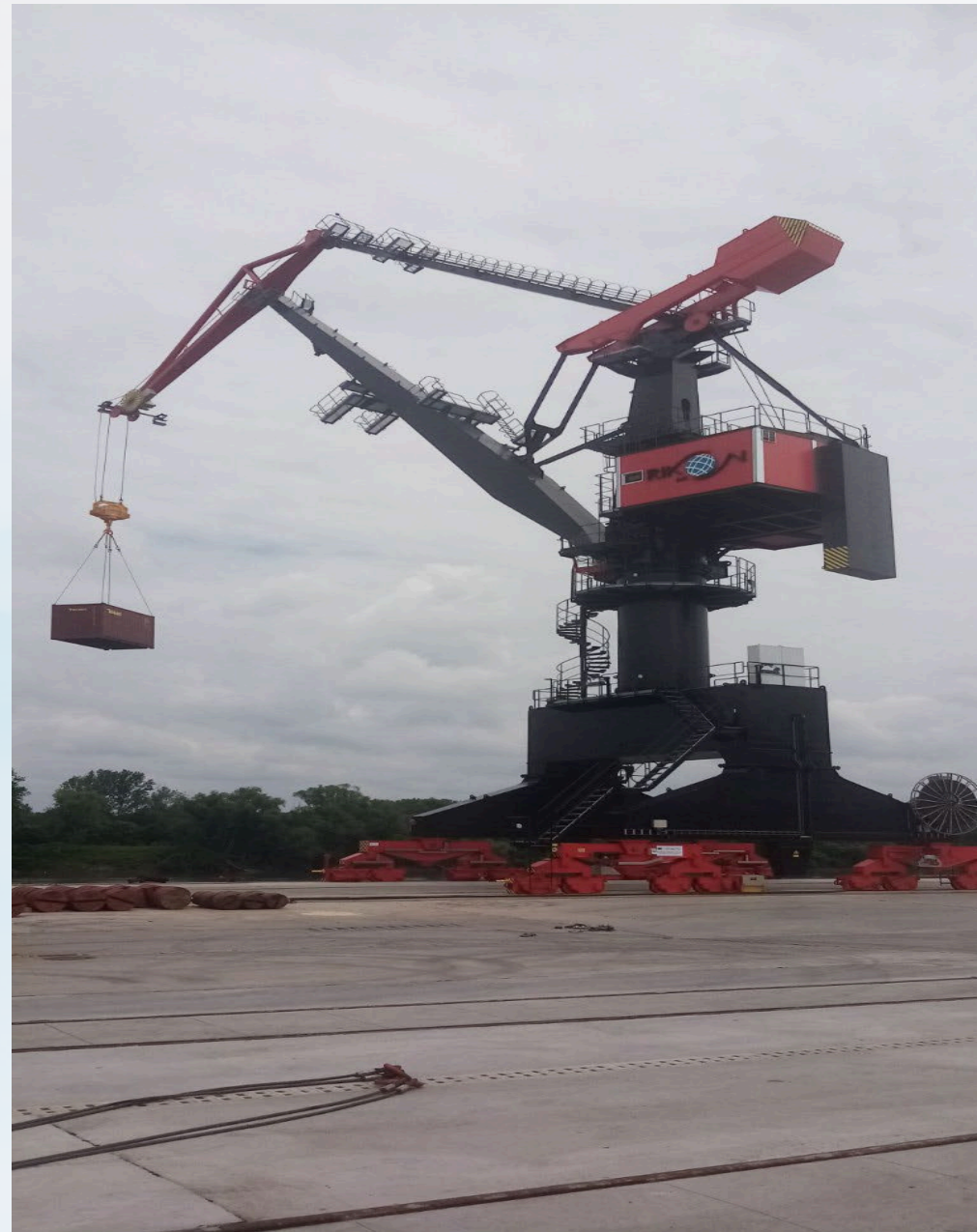


# The Port of Brčko in a new look





# The Port of Brčko in a new look





# The Port of Brčko in a new look





## MISSION

**of business is to use the natural advantages of the Sava River, to ensure the quality of services and the development of partnerships relations with clients, and build a stable market position in the country and abroad on those values. Providing high-quality port services that are constantly adjusted to the demands of the world market is the basis of the company's business policy. The preservation of the current and future expansion of the Port of Brčko is based on it and its role as an important transit port for countries that gravitate to the Black Sea basin.**

## VISION

**business is for the Port of Brčko to be recognizable in the local, regional and global environment as a well-organized business entity, oriented towards the future and business excellence**



# Business issues

## **THE PROBLEM OF DISORGANIZATION OF THE NAVIGATION OF THE SAVA RIVER:**

The irregularity of the Sava River bed prevents the arrival of ships and the performance of the basic activity of transshipment for a long period of time during the year, and represents a key problem in our business and providing better services to clients throughout the year.

## **Laws and regulations:**

The status of the interstate Rulebook on the joint maintenance of the Sava waterway between Croatia and BiH, the status of the bridge over the Sava near Brcko, which has been closed to truck traffic since 2019, which affects the traffic of the port of Brcko, the current project of demining the right bank of the Sava River, etc.

## **Other factors that affected the business:**

The global pandemic of COVID-19 and the war conflict in Ukraine, etc.

**THANK YOU  
FOR YOUR ATTENTION  
!!!**